

MONTHLY MEMBERSHIP PROGRESS REPORT

LOCATION ARKANSAS

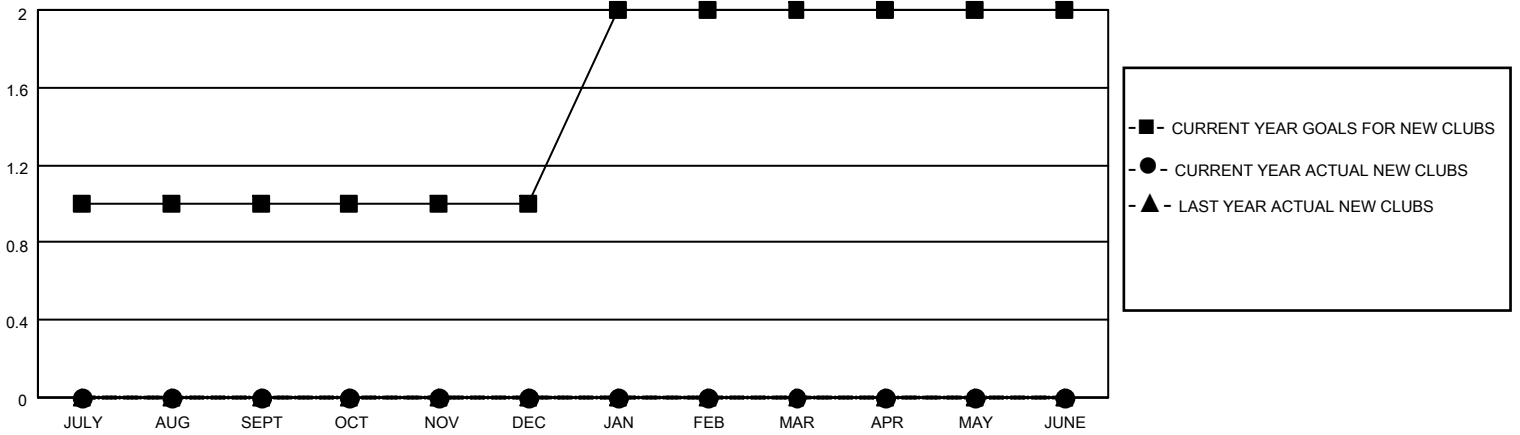
District 7 O

Results as of: 2/28/2023

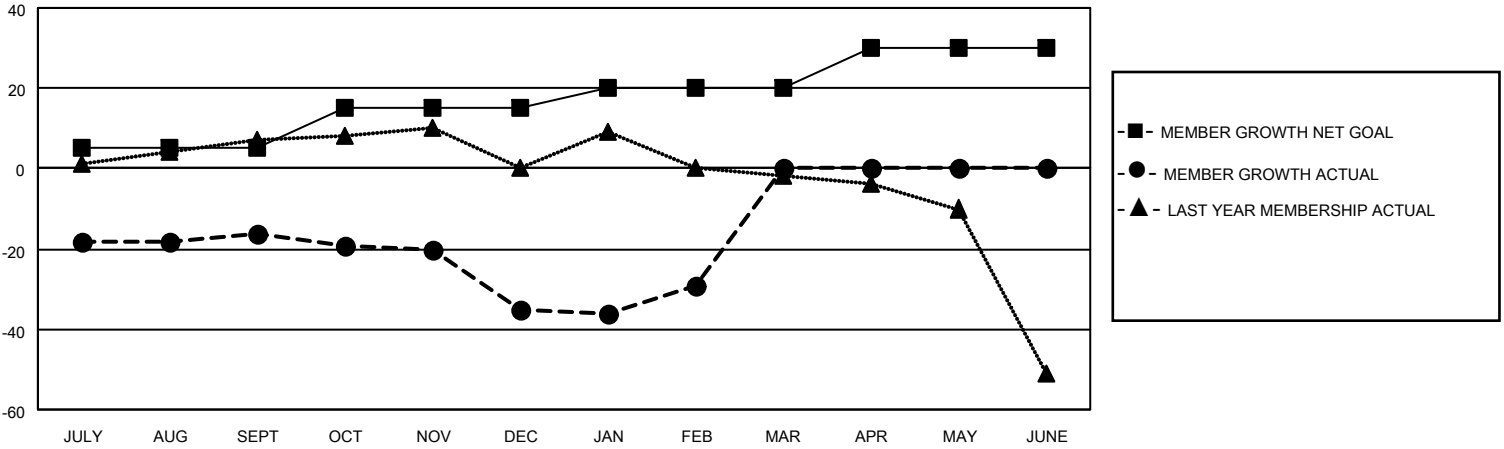
| Clubs | | | |
|-----------------------|---------------|-----------|---------------|
| RESULTS FOR 2022-2023 | | | |
| QUARTER | NEW CLUB GOAL | NEW CLUBS | DROPPED CLUBS |
| JULY/AUG/SEPT | 1 | 0 | 2 |
| OCT/NOV/DEC | 0 | 0 | 0 |
| JAN/FEB/MAR | 1 | 0 | 0 |
| APR/MAY/JUNE | 0 | 0 | 0 |

| Members | | | |
|-----------------------|------------------------|----------------------|---|
| RESULTS FOR 2022-2023 | | | |
| QUARTER | MEMBER GROWTH NET GOAL | MEMBER GROWTH ACTUAL | DROPPED MEMBERS ACTUAL (including transfers) |
| JULY/AUG/SEPT | 5 | 15 | 23 |
| OCT/NOV/DEC | 10 | 3 | 21 |
| JAN/FEB/MAR | 5 | 12 | 5 |
| APR/MAY/JUNE | 10 | 0 | 0 |

GOALS AND ACTUAL NEW CLUBS CUMULATIVE



GOALS AND ACTUAL MEMBERS CUMULATIVE



| | | |
|--|--|---|
| <p>DROPPED CLUBS: 2</p> | <p>12 CLUBS OF 25 ADDED 1 OR MORE NEW MEMBERS</p> | <p style="text-align: center;"><u>GENDER DISTRIBUTION</u></p> <p>MALE 320 (64.00%) FEMALE 180 (36.00%) NON BINARY 0 (0.00%) PREFER NOT TO ANSWER 0 (0.00%)</p> |
| <p><u>DROPPED MEMBERS</u></p> <p>DECEASED 6 CLUB CANCELLED 9 OTHER 34 TOTAL 49</p> | <p>CLICK HERE FOR CUMULATIVE MEMBERSHIP DATA</p> | <p>TOTAL FAMILY UNIT MEMBERS 101 FAMILY MEMBERS PAYING HALF DUES 53</p> |